

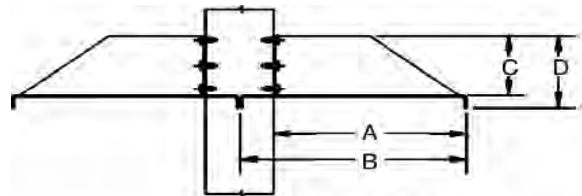
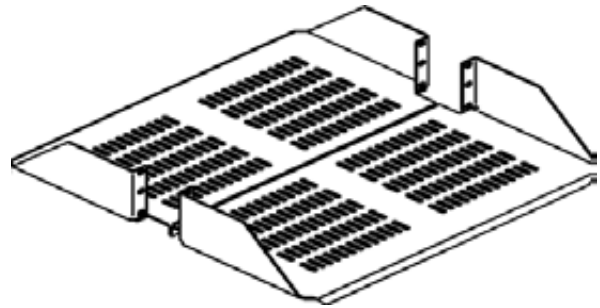
# Product Cut Sheet

## DOUBLE-SIDED LOW PROFILE VENTED SHELF

Reduced height design saves valuable rack space and perforated shelf keeps equipment cool, bottom ventilation for enhanced airflow circulation. Mounting hardware not included. 19" version holds equipment up to 17.75"W x 19.8"D (450.9 mm x 503.4 mm). Mounts on 3"D (80 mm) double-sided racks only. Made of strong, lightweight aluminum; supports up to 60 lb (27.2 kg).

Part Number	Description	Shipping Weight lb (kg)
11359-X19	Low Profile Vented Shelf For 19" Rack	8 (3.6)
11359-X23	Low Profile Vented Shelf For 23" Rack	9 (4.1)

X=color: 1=Gray, 2=Computer Beige, 5=Clear, 7=Black, E=Glacier White



- A 8.53" (216.7 mm)
- B 10.0" (254.0 mm)
- C 2.91" (73.9 mm)
- D 3.53" (89.7 mm)

800-834-4969 in U.S. & Canada • [www.chatsworth.com](http://www.chatsworth.com)



CHATSWORTH PRODUCTS

©2013 Chatsworth Products, Inc. All rights reserved. CPI, CPI Passive Cooling, GlobalFrame, MegaFrame, Saf-T-Grip, Seismic Frame, SlimFrame, TeraFrame, Cube-IT Plus, Evolution, OnTrac, Velocity and QuadraRack are federally registered trademarks of Chatsworth Products. eConnect and Simply Efficient are trademarks of Chatsworth Products. All other trademarks belong to their respective companies. 6/13